

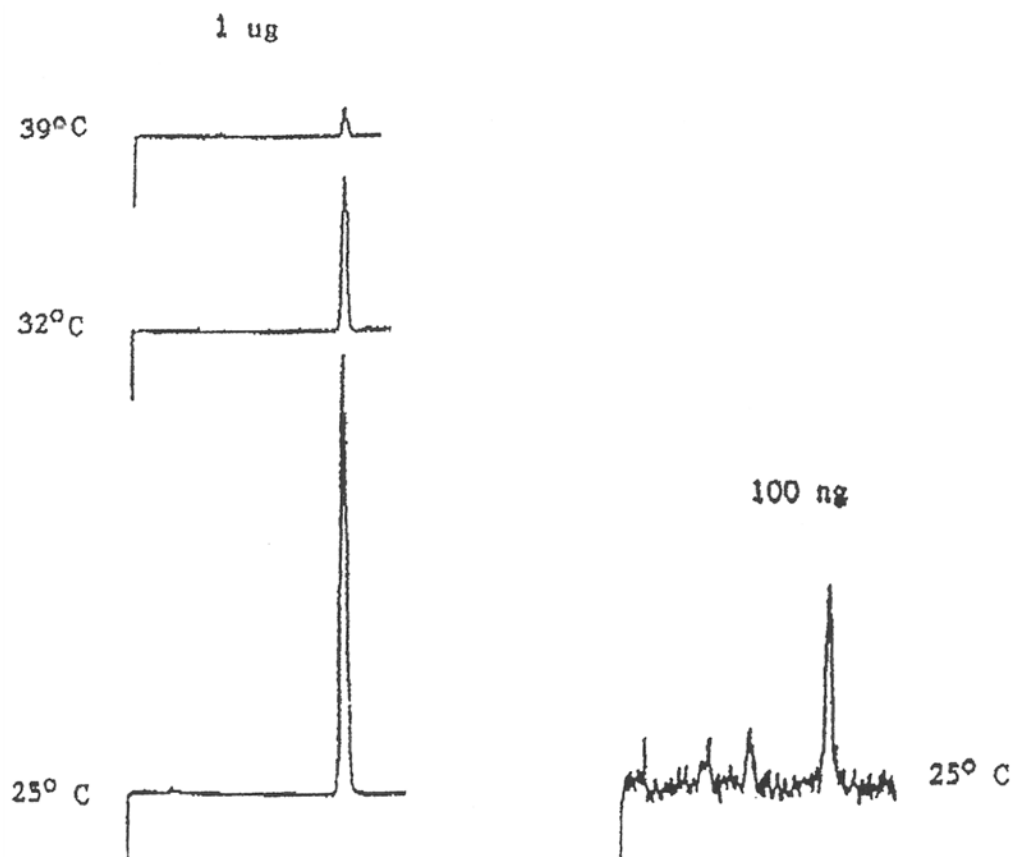
## SEDEX Low Temperature Evaporative Light Scattering Detector

### SAMPLE: UREA

HPLC

#### Effect of Temperature on Detector Signal

As the temperature of the detector increases, urea decomposes and its contribution to the observed signal decreases.



#### CONDITIONS

Column	Asahipak, 5 $\mu$ m, NH <sub>2</sub> 250 x 4.6 mm
Injected sample	1 $\mu$ g ( 2 $\mu$ l, 500 ppm ) 100 ng ( 4 $\mu$ l, 25 ppm )
Eluent	CH <sub>3</sub> CN/H <sub>2</sub> O (85/15)
Flow Rate	1 ml/min
Pressure	2.2 bars
Gas	Nitrogen
Temperature	As indicated

Analyzed By : Richard Scientific, Novato CA 94949 USA