

SEDEX^{LT-ELSD}TM

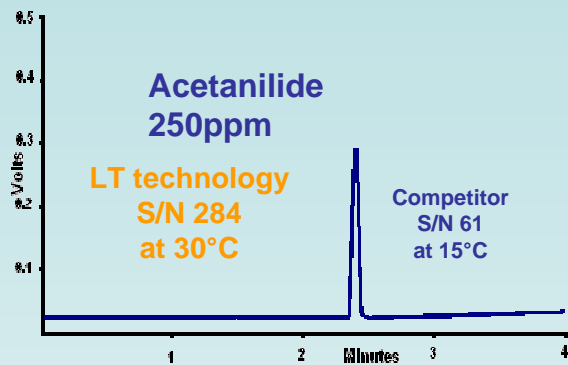


The **Low Temperature** technology

LOW-TEMPERATURE TECHNOLOGY IS NOT ONLY COOLING TEMPERATURE !!!

Chromatography conditions:

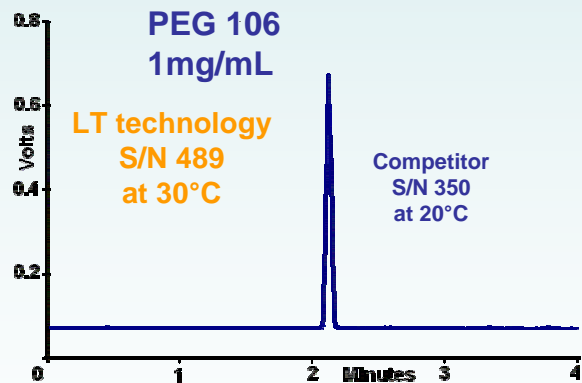
Column: C18, 4.6 x 150mm, 5µm
 Eluent: A = H₂O + 0.1% TFA
 B = ACN + 0.1% TFA
 Flowrate: 1mL/min
 Gradient: 60% to 90% B in 5min
 Injected volume: 20µL
 Detector: SEDEX **LT-ELSD**, 30°C,
 3.5bars



Competitor using only a Peltier cooled evaporation obtained S/N 61 at 15°C...

Chromatography conditions:

Column: C18, 4.6 x 150mm, 5µm
 Eluent: Isocratic H₂O/ACN (90:10)
 Flowrate: 1mL/min
 Injected volume: 10µL
 Detector: SEDEX **LT-ELSD**, 30°C,
 3.5bars



The same competitor using only a Peltier cooled evaporation obtained S/N 350 at 20°C...

Low Temperature technology always provides the **Highest S/N**