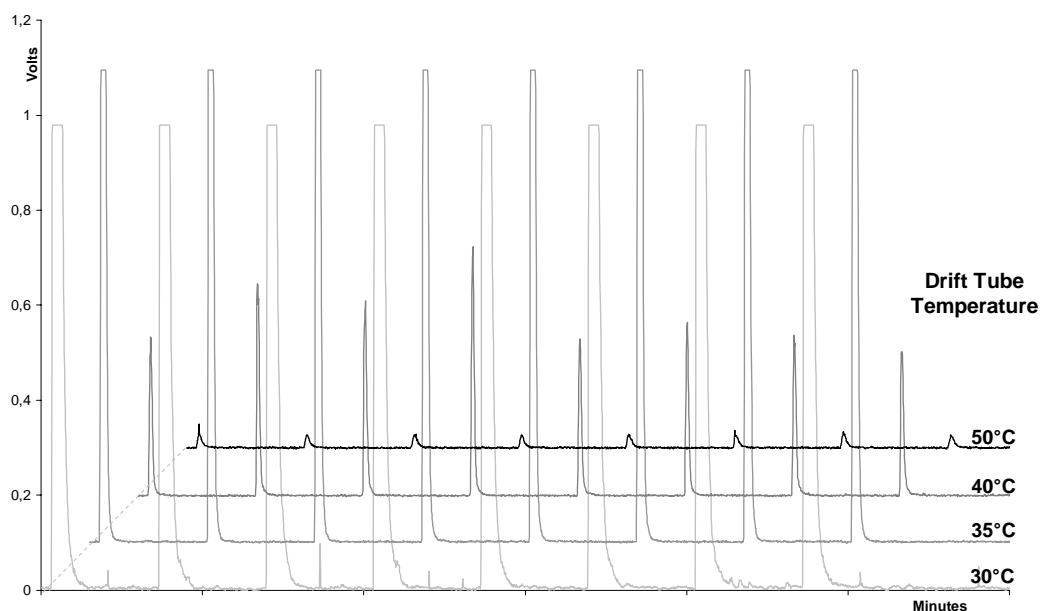


SEDEX Low Temperature Evaporative Light Scattering Detector

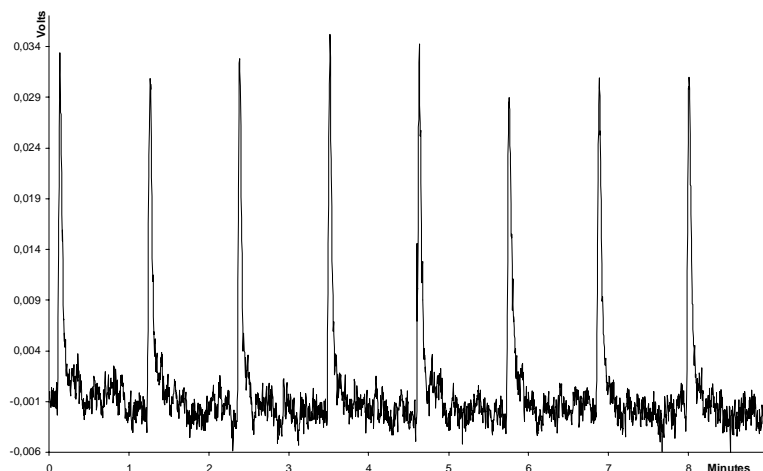
SAMPLE: ETHYLENE GLYCOL

HPLC



LOQ = 2.16 ppm

LOD = 0.65 ppm



CONDITIONS

| | |
|-----------------|--|
| Injected volume | 10 μ l (500 mg/l for LT Studies) (2.5 mg/l for LOD/Q Determination) |
| Mobile phase | Water |
| Flow rate | 1 ml/min |
| Gas | Air |
| Gain | 12 |
| Temperature | 32°C |

S.E.D.E.R.E.

PARC VOLTA - BP 27

9, rue Parmentier

94141 Alfortville Cedex FRANCE

Application#141