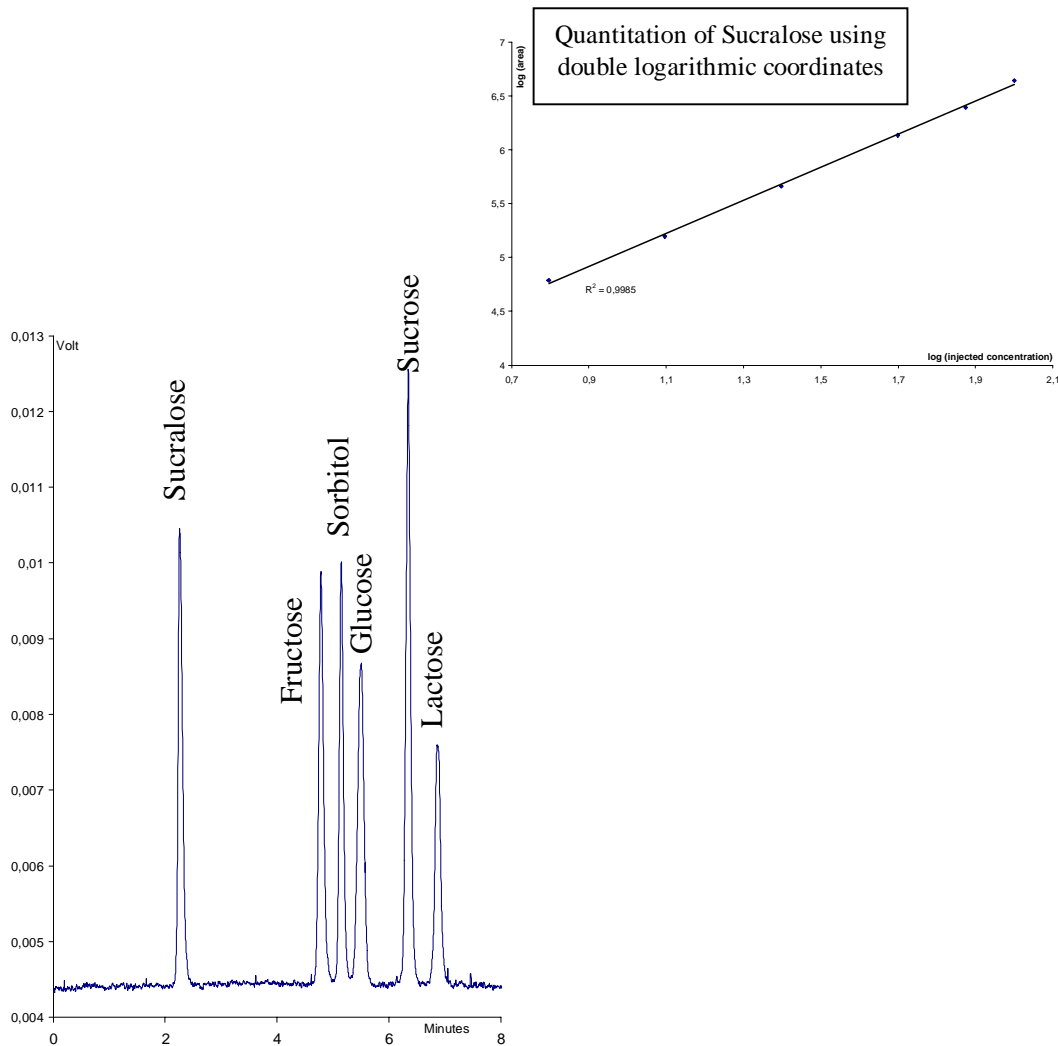


# SEDEX Low Temperature Evaporative Light Scattering Detector

## SAMPLE: SUCRALOSE & Carbohydrates

HPLC



### CONDITIONS

Columns	<i>Prevail Carbohydrate ES - 5 <math>\mu</math>m 150 x 4.6 mm</i>
Injected Volume	<i>5 <math>\mu</math>l - 50 ppm each</i>
Eluent	<i>Gradient MeCN / Water from 80:20 to 50:50 in 10 minutes</i>
Flow Rate	<i>1.0 ml/min</i>
Pressure	<i>3.5 bars</i>
Gas	<i>Nitrogen</i>
Temperature	<i>50° C</i>

Analyzed By : R. Pennanec - SEDERE

**S.E.D.E.R.E.**

PARC VOLTA - BP 27

9, rue Parmentier

94141 Alfortville Cedex FRANCE

Application #143