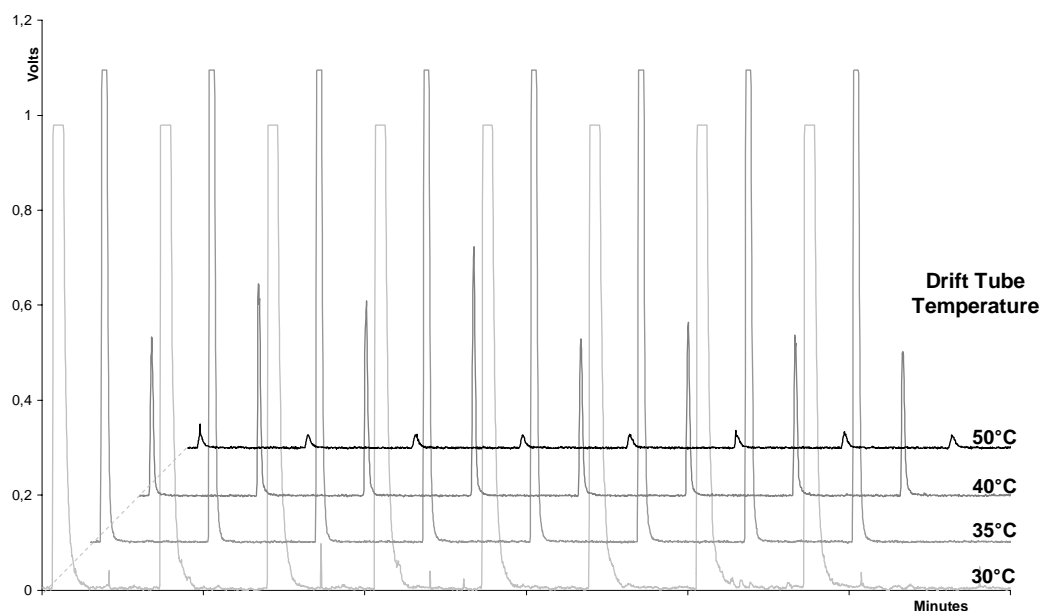


# SEDEX Low Temperature Evaporative Light Scattering Detector

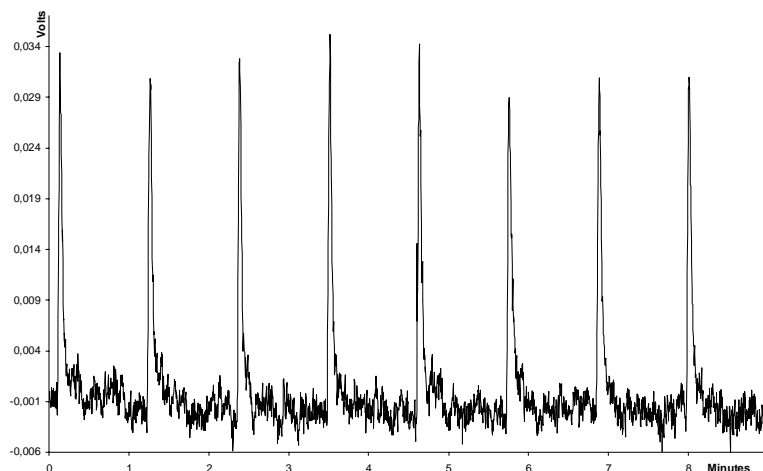
**SAMPLE: ETHYLENE GLYCOL**

**HPLC**



**LOQ = 2.16 ppm**

**LOD = 0.65 ppm**



## CONDITIONS

Injected volume	10 $\mu$ l (500 mg/l for LT Studies) (2.5 mg/l for LOD/Q Determination)
Mobile phase	Water
Flow rate	1 ml/min
Gas	Air
Gain	12
Temperature	32°C

**S.E.D.E.R.E.**

PARC VOLTA - BP 27

9, rue Parmentier

94141 Alfortville Cedex FRANCE

**Application#141**