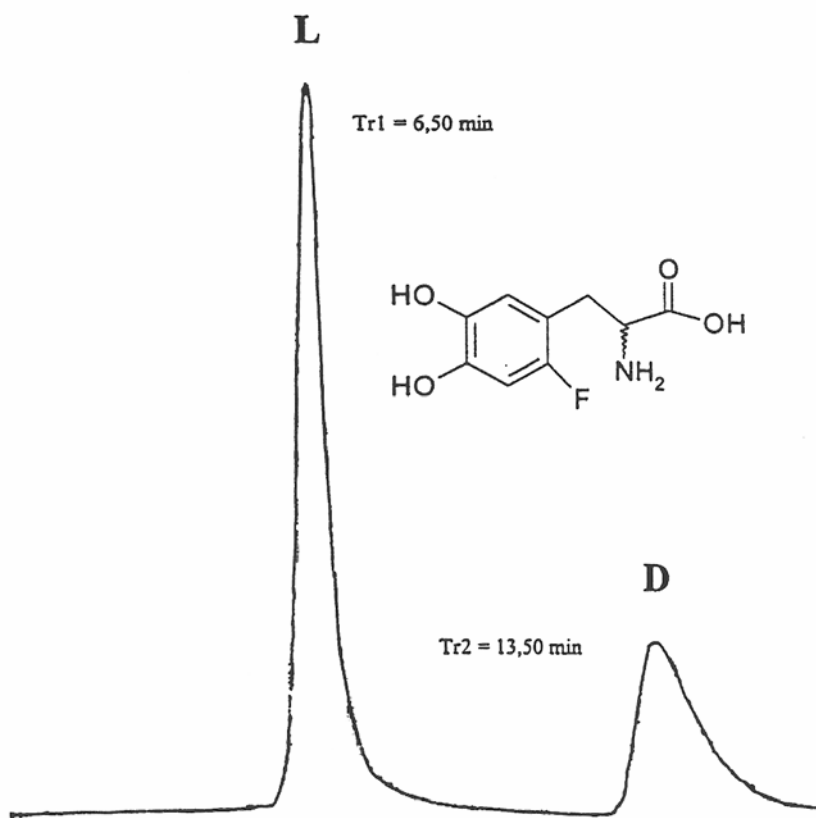


SEDEX Low Temperature Evaporative Light Scattering Detector

SAMPLE: FLUORODOPA

HPLC

AMINO-ACID Direct Enantiomeric Separation



$K'_1 = 1.66$

$K'_2 = 3.02$

$\alpha = 1.8$

$R_s = 4.4$

CONDITIONS

Column	<i>Chirobiotic T 250 x 4.6 mm</i>
Injected volume	<i>5 μl (1.5 mg/l)</i>
mobile phase	<i>Acetonitrile / Water (80/20)</i>
Flow rate	<i>1 ml/min</i>
Gas	<i>Air</i>
Gain	<i>11</i>
Temperature	<i>25°C</i>

Analyzed by : CEA SACLAY – Service des molécules marquées – 91191 GIF/YVETTE CEDEX - FRANCE

S.E.D.E.R.E.

PARC VOLTA - BP 27

9, rue Parmentier

94141 Alfortville Cedex FRANCE

Application#133