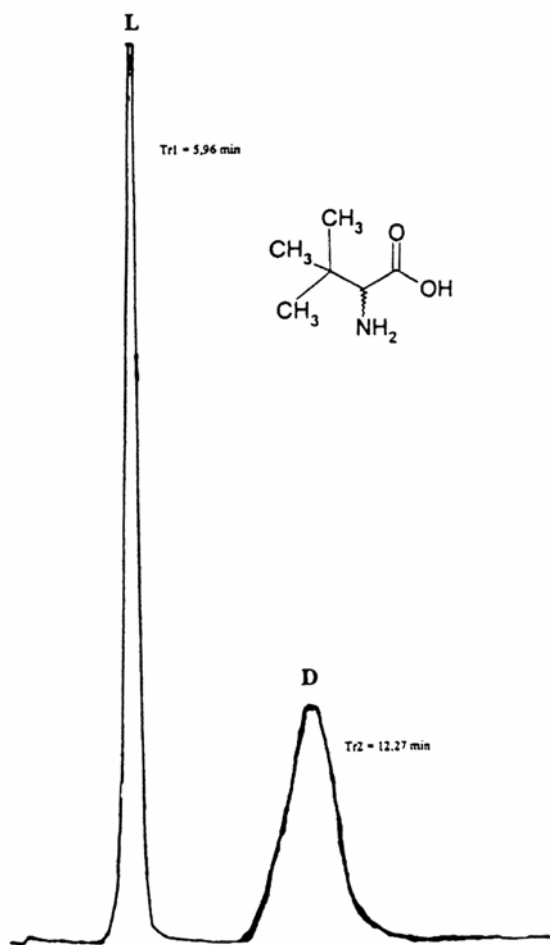


SEDEX Low Temperature Evaporative Light Scattering Detector

SAMPLE: NOR-LEUCINE

HPLC

AMINO-ACID Direct Enantiomeric Separation



$K'_1 = 0.98$
 $K'_2 = 3.07$

$\alpha = 3.10$
 $R_s = 3.00$

CONDITIONS

Column	Chirobiotic T 250 x 4.6 mm
Injected volume	5 μ l (1.5 mg/l)
mobile phase	Acetonitrile / Water (80/20)
Flow rate	1 ml/min
Gas	Air
Gain	11
Temperature	25°C

Analyzed by : CEA SACLAY – Service des molécules marquées – 91191 GIF/YVETTE CEDEX - FRANCE

S.E.D.E.R.E.

PARC VOLTA - BP 27

9, rue Parmentier

94141 Alfortville Cedex FRANCE

Application#131