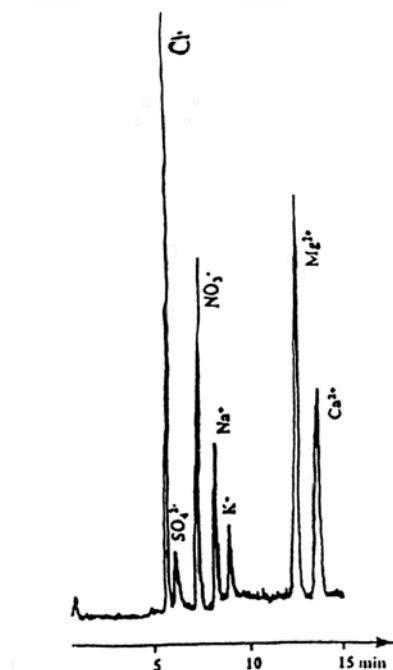


# SEDEX Low Temperature Evaporative Light Scattering Detector

## DIRECT AND SIMULTANEOUS ANION AND CATION ANALYSIS

HPLC

World pending Patent



Stationary phase :

- for cation exchange : SCX 10  $\mu$ m
- for anion retention : Hypercarb 5  $\mu$ m

Mobile phase :

- 0-4 min flow rate: 0.4 ml/min HCOOH/NH<sub>4</sub>OH 30/20 mM
- 4-20 min flow rate: 1 ml/min HCOOH/NH<sub>4</sub>OH 100/87 mM

Sample :

Standard solution-Injected volume 20  $\mu$ l

- Na<sup>+</sup> ; K<sup>+</sup> ; Mg<sup>++</sup> ; Ca<sup>++</sup> 10 ppm
- Cl<sup>-</sup> 30 ppm
- SO<sub>4</sub><sup>2-</sup> 20 ppm
- NO<sub>3</sub><sup>-</sup> 50 ppm

### CONDITIONS

Pressure	2 bars
Gas	Air
Gain	10
Temperature	45°C

Analyzed by : LCBA 45100 Orléans FRANCE

S.E.D.E.R.E.

PARC VOLTA - BP 27

9, rue Parmentier

94141 Alfortville Cedex FRANCE

Application #106