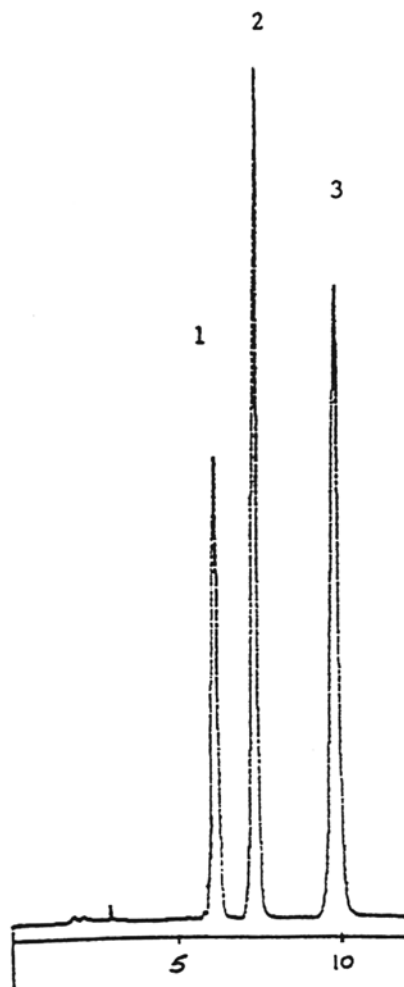


SEDEX Low Temperature Evaporative Light Scattering Detector

SAMPLE : SUGAR STANDARDS

HPLC



1. Xylose
2. Mannitol
3. Lactulose

CONDITIONS

Column	<i>Asahipak NH2P-50, 4.6 X 250 mm</i>
Injected volume	<i>1 µg (20 µl, 50 ppm)</i>
mobile phase	<i>25 % water/75 % acetonitrile</i>
Flow rate	<i>1 ml/min</i>
Pressure	<i>2.3 bars</i>
Gas	<i>Nitrogen</i>
Gain	<i>8</i>
Temperature	<i>40°C</i>

Analyzed by : Richard SCIENTIFIC U.S.A.

S.E.D.E.R.E.
PARC VOLTA - BP 27
9, rue Parmentier
94141 Alfortville Cedex FRANCE

Application #105