

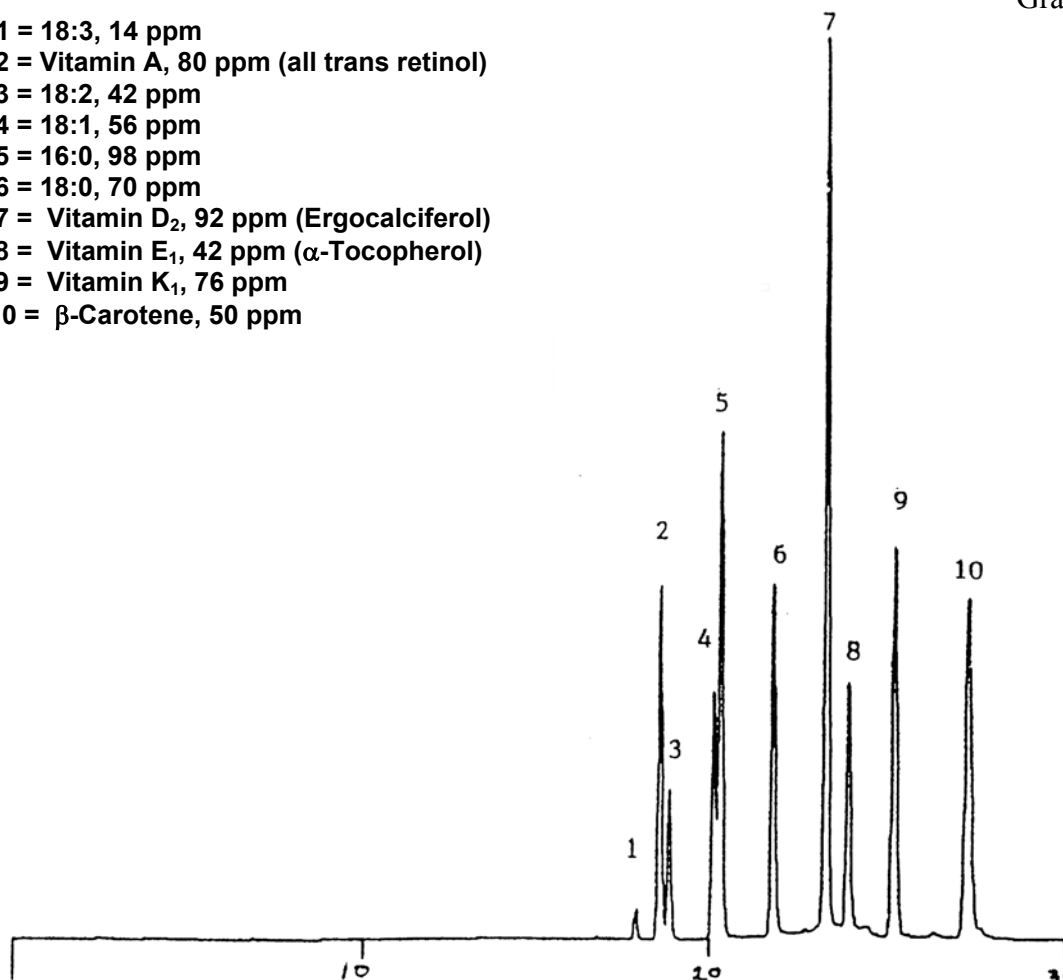
SEDEX Low Temperature Evaporative Light Scattering Detector

SAMPLE: VITAMINS/FATTY ACID STANDARDS

HPLC

Gradient

- 1 = 18:3, 14 ppm
- 2 = Vitamin A, 80 ppm (all trans retinol)
- 3 = 18:2, 42 ppm
- 4 = 18:1, 56 ppm
- 5 = 16:0, 98 ppm
- 6 = 18:0, 70 ppm
- 7 = Vitamin D₂, 92 ppm (Ergocalciferol)
- 8 = Vitamin E₁, 42 ppm (α -Tocopherol)
- 9 = Vitamin K₁, 76 ppm
- 10 = β -Carotene, 50 ppm



Gradient : 85:10:5 to 0:70:30 in 15 min.

0:70:30 to 0:30:70 in 5 min.

CONDITIONS

Column	<i>Kromasil ODS, 5 μm (250 x 4.6 mm)</i>
Injected sample	<i>20 μl</i>
Eluent	<i>A : 0.2% TFA (aqueous) B : CH₃CN with 0.05% TFA C : Acetone</i>
Flow Rate	<i>1 ml/min</i>
Pressure	<i>2.2 bars</i>
Gas	<i>Nitrogen</i>
Temperature	<i>40° C</i>

Analyzed By : Richard Scientific, Novato CA 94949 USA

S.E.D.E.R.E.

PARC VOLTA - BP 27

9, rue Parmentier

94141 Alfortville Cedex FRANCE

Application #101