

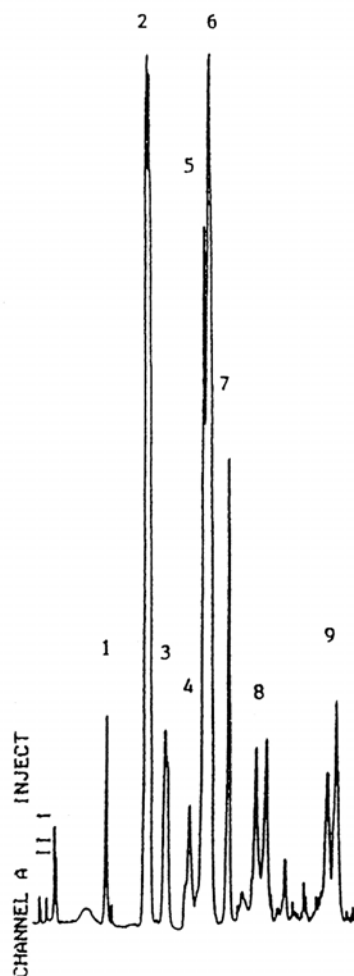
SEDEX Low Temperature Evaporative Light Scattering Detector

SAMPLE: PHOSPHOLIPID STANDARDS

HPLC

Gradient

- 1 = Phosphatidyl Glycerol
- 2 = Phosphatidyl Ethanolamine
- 3 = Phosphatidyl Inositol
- 4 = Phosphatidyl Serine
- 5 = Lysophosphatidyl Ethanolamine
- 6 = Phosphatidyl Choline
- 7 = Phosphatidic Acid
- 8 = Spingomyelin (double peak)
- 9 = Lysophosphatidyl Choline (double peak)



Gradient : 0% B to 20% B in 14 min.
20% B to 25% B in 3 min.

CONDITIONS	
Column	<i>Kromasil Si, 5 μ (150 x 4.6 mm)</i>
Injected sample	<i>20 μl</i>
Eluent	<i>A : CHCL₃ /MeOH/NH₄OH (con) (80/19.5/0.5) B : MeOH/H₂O/NH₄OH (con) (80/19.5/0.5)</i>
Flow Rate	<i>1 ml/min</i>
Pressure	<i>2.2 bars</i>
Gas	<i>Nitrogen</i>
Temperature	<i>40° C</i>

Analyzed By : Richard Scientific, Novato CA 94949 USA

S.E.D.E.R.E.

PARC VOLTA - BP 27

9, rue Parmentier

94141 Alfortville Cedex FRANCE

Application #98