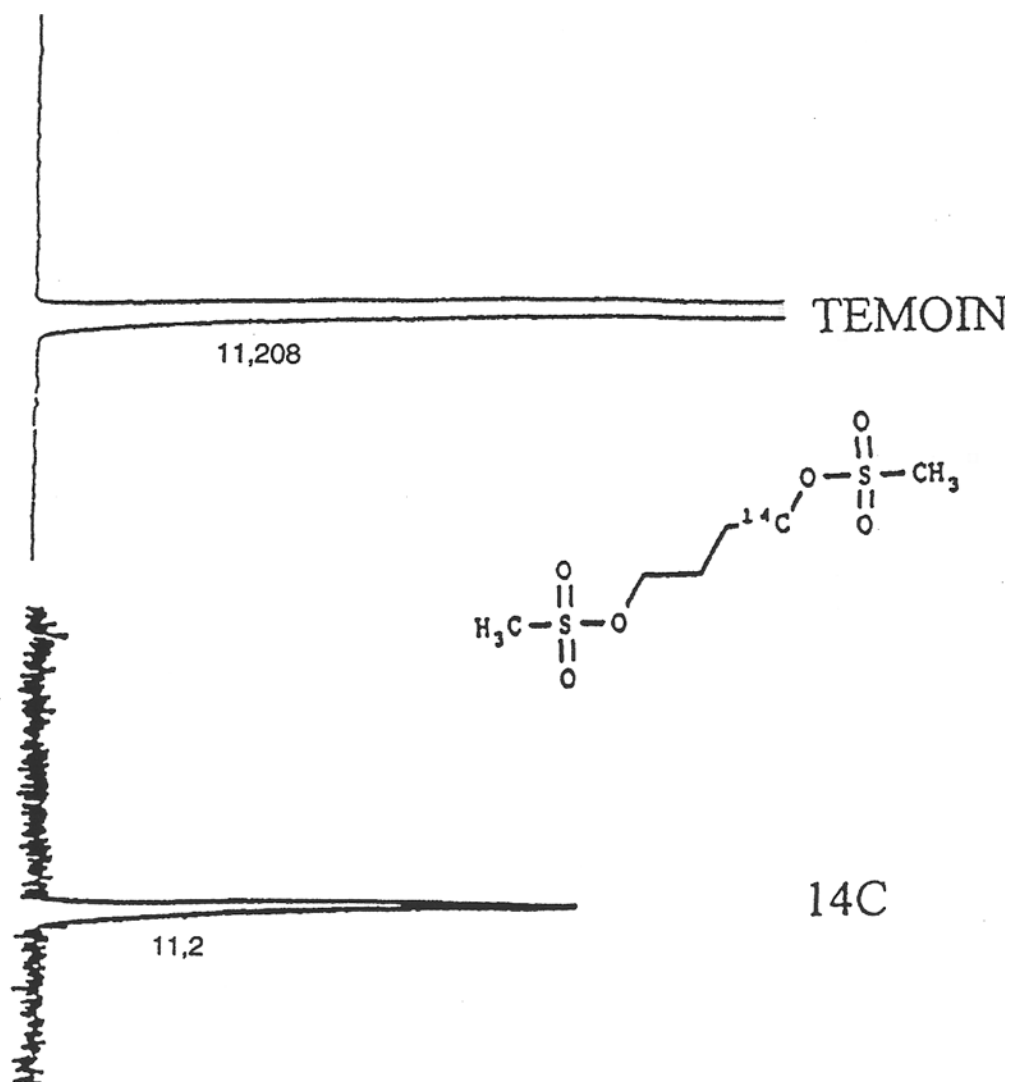


# SEDEX Low Temperature Evaporative Light Scattering Detector

SAMPLE: BISULFAN 14 C AND TEMOIN

HPLC



## CONDITIONS

Column	Zorbax ODS 250 x 4.6 mm
Injected Volume	10 $\mu$ l
Eluent	Methanol/Water (90/10)
Flow Rate	1.5 ml/min
Pressure	2.2 bars
Gas	Helium
Temperature	45° C

Analyzed by: CE Saclay Molecules Marqueses 91191 Gif Sur Yvette FRANCE