

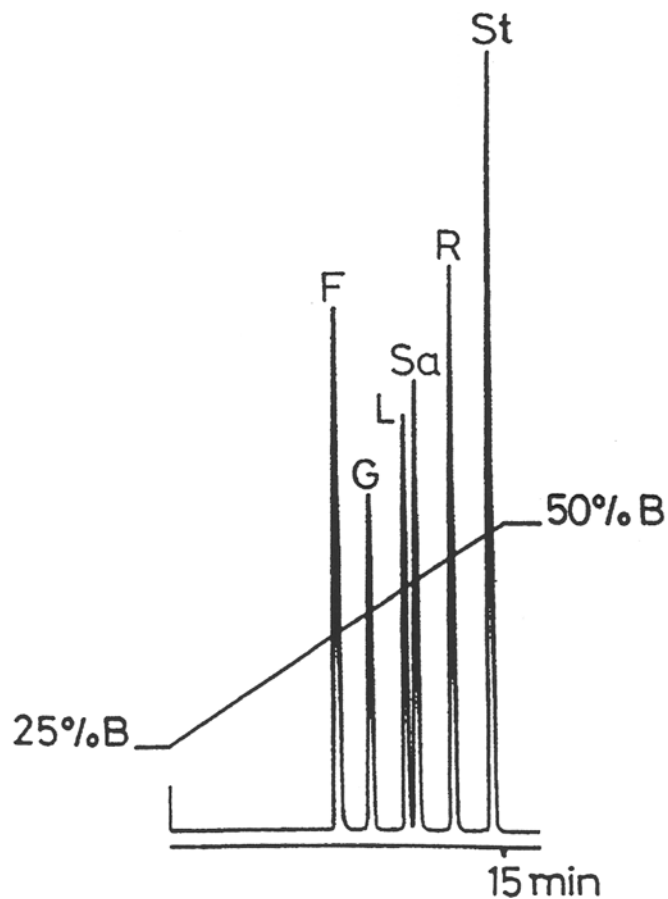
SEDEX Low Temperature Evaporative Light Scattering Detector

SAMPLE: SUGARS

HPLC
Gradient

Peaks

F: Fructose
G: Glucose
L: Lactose
S: Sucrose
R: Raffinose
St: Stachyose



Gradient: Acetonitrile, 25 % to 50 % in 15 min

CONDITIONS

Column	<i>Asahipak NH₂</i> <i>250 x 4.6 mm</i>
Injected Volume	<i>20 µl (2 ppm)</i>
Eluent	<i>A: Acetonitrile</i> <i>B: Water</i>
Flow Rate	<i>1.0 ml/min</i>
Pressure	<i>2 bars</i>
Gas	<i>Air</i>
Temperature	<i>50° C</i>

Analyzed by: LCBA 45000 Orleans FRANCE

S.E.D.E.R.E.
PARC VOLTA - BP 27
9, rue Parmentier
94141 Alfortville Cedex FRANCE

Application #75