

SEDEX Low Temperature Evaporative Light Scattering Detector

SAMPLE: POLYETHYLENE

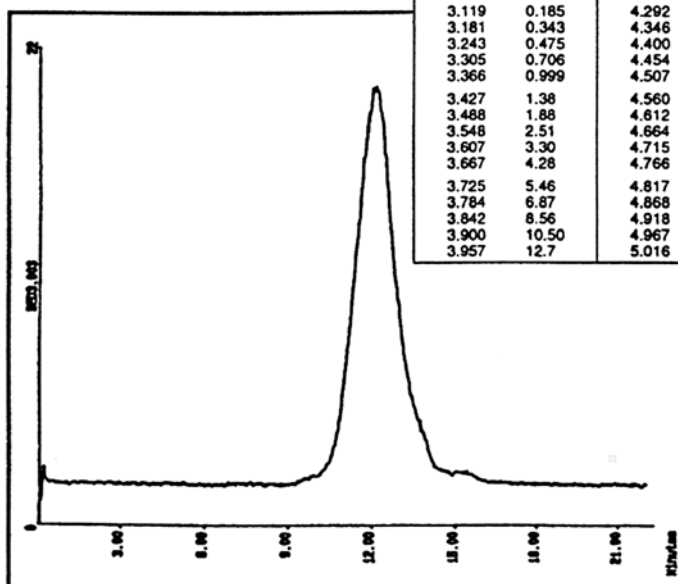
GPC

High Temperature

Table 1. Cumulative Molecular Weigh Distribution
by Gel-Permeation Chromatography

log M	WL %	log M	WL %	log M	WL %
2.800	0.0	4.014	15.2	5.065	90.7
2.865	0.005	4.070	18.1	5.113	92.2
2.929	0.020	4.126	21.5	5.161	93.7
2.992	0.052	4.182	25.2	5.209	94.8
3.056	0.105	4.237	29.3	5.256	95.8
3.119	0.185	4.292	33.7	5.303	96.6
3.181	0.343	4.346	38.5	5.349	97.3
3.243	0.475	4.400	43.4	5.395	97.9
3.305	0.706	4.454	48.5	5.440	98.4
3.366	0.999	4.507	53.5	5.485	98.7
3.427	1.38	4.560	58.3	5.530	99.1
3.488	1.88	4.612	62.9	5.574	99.3
3.548	2.51	4.664	67.3	5.618	99.5
3.607	3.30	4.715	71.4	5.662	99.7
3.667	4.28	4.766	75.1	5.705	99.8
3.725	5.46	4.817	78.5	5.789	99.9
3.784	6.87	4.868	81.6	5.87	100.0
3.842	8.56	4.918	84.4		
3.900	10.50	4.967	86.7		
3.957	12.7	5.016	88.9		

M = 630



M = 741,310

Mn = 17,930
Mw = 52,000

CONDITIONS

Column	2 x PL Gel 10 μ m/mixed B 300 x 7.5 mm
Injected Volume	200 μ l
Eluent	TCB (1,2,4-Trichlorobenzene) + 0.05% Santonox R
Flow Rate	1.0 ml/min
Pressure	2.5 bars
Gas	Air
Gain	6
Temperature	40 ^o C

Analyzed by : Polymer Laboratories, Church Stretton GREAT BRITAIN

S.E.D.E.R.E.
PARC VOLTA - BP 27
9, rue Parmentier
94141 Alfortville Cedex FRANCE

Application #69