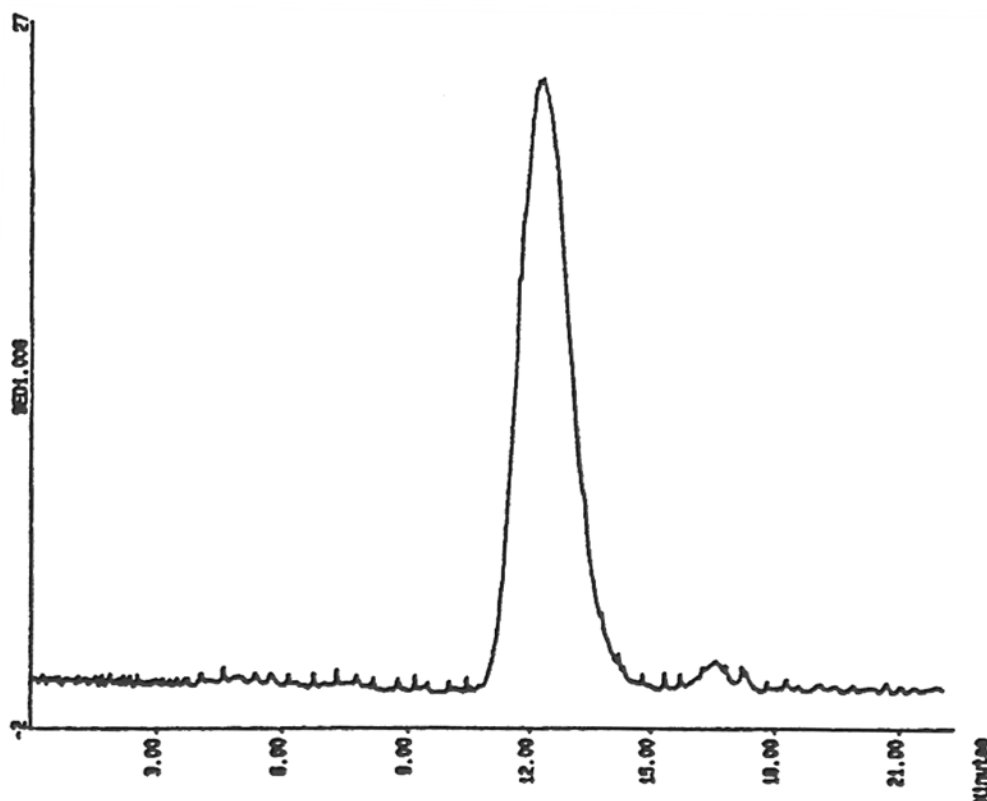


SEDEX Low Temperature Evaporative Light Scattering Detector

SAMPLE: DOW 1683 POLYSTYRENE

GPC



CONDITIONS

Column	2 x PL Gel 10 μm /mixed B 300 x 7.5 mm
Injected Volume	200 μl
Eluent	THF (Stabilized)
Flow Rate	1.0 ml/min
Pressure	2.5 bars
Gas	Air
Gain	6
Temperature	40 $^{\circ}$ C

Analyzed by : Polymer Laboratories, Church Stretton GREAT BRITAIN

S.E.D.E.R.E.
PARC VOLTA - BP 27
9, rue Parmentier
94141 Alfortville Cedex FRANCE

Application #68