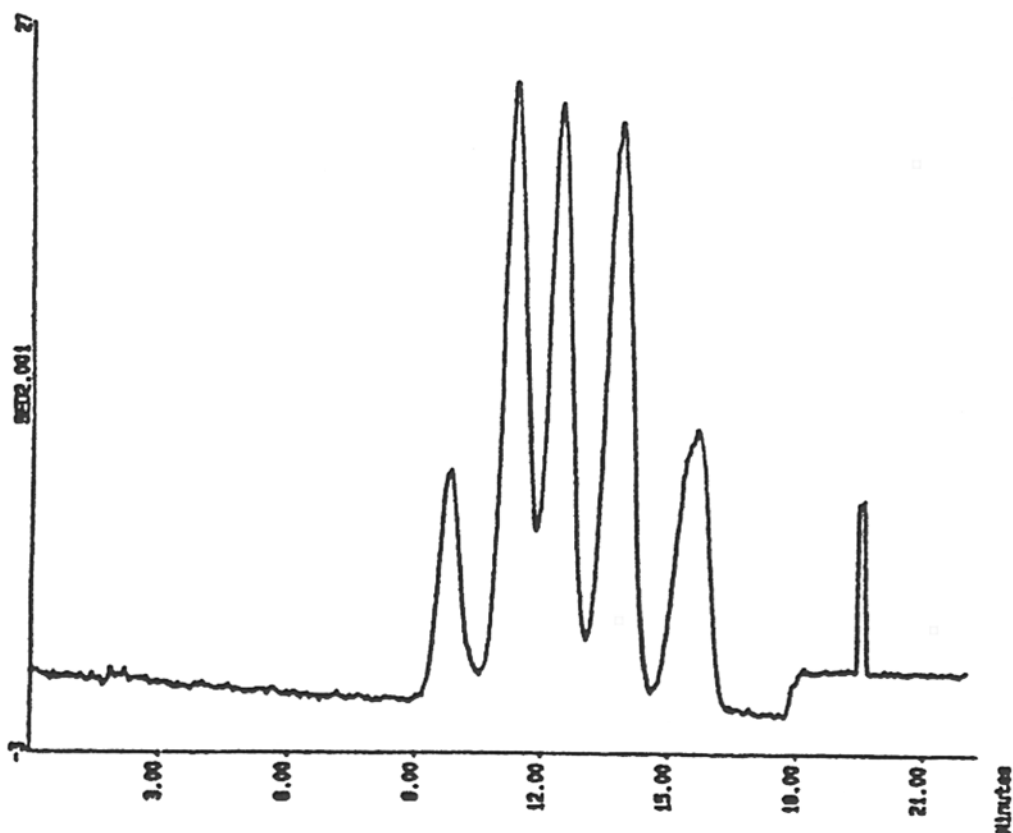


SEDEX Low Temperature Evaporative Light Scattering Detector

**SAMPLE: PL-EASICAL POLYSTYRENE
STANDARDS**

GPC

High Temperature



Teflon inlet tube heated at 40° C, otherwise identical to Application 65

CONDITIONS

Column	2 x PL Gel 10 µm/mixed B 300 x 7.5 mm
Injected Volume	200 µl (Concentration 0.1 %)
Eluent	TCB (1,2,4-Trichlorobenzene) + 0.05 % Santonox R
Flow Rate	1.0 ml/min
Pressure	2.5 bars
Gas	Air
Gain	6
Temperature	140° C

Analyzed by : Polymer Laboratories, Church Stretton GREAT BRITAIN

S.E.D.E.R.E.
PARC VOLTA - BP 27
9, rue Parmentier
94141 Alfortville Cedex FRANCE

Application #66