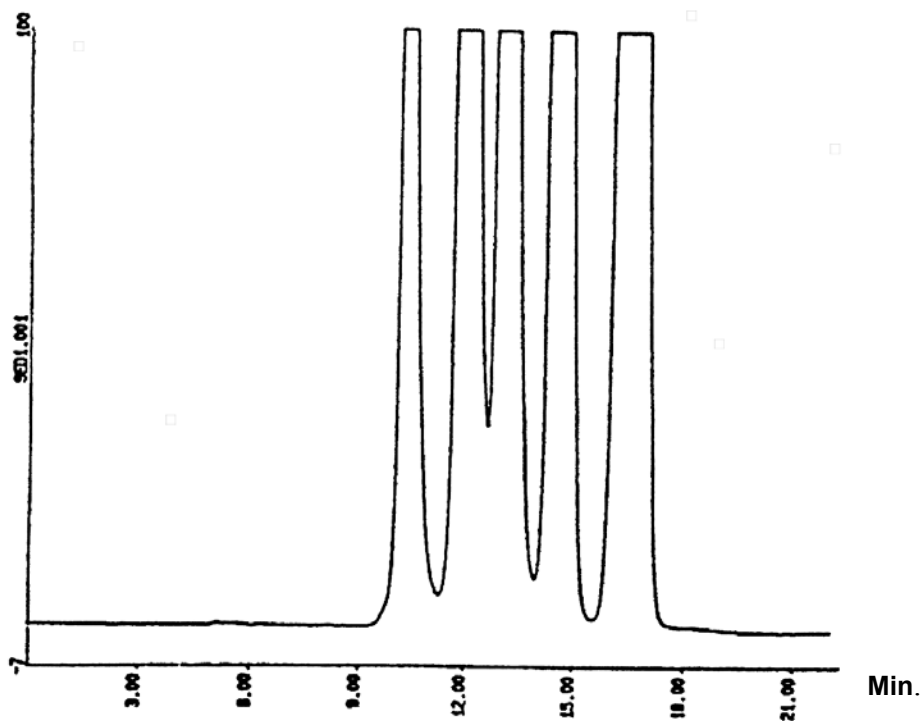


SEDEX Low Temperature Evaporative Light Scattering Detector

SAMPLE: PL-EASICAL POLYSTYRENE STANDARDS

GPC

	CHARACTERIZED MW	OBSERVED MW
1	3,040,000	3,066,000
2	330,000	321,000
3	66,000	66,000
4	9,200	9,375
5	580	640



CONDITIONS

Column	2 x PL Gel 10 μ m/mixed B 300 x 7.5 mm
Injected Volume	200 μ l (Concentration 0.1 %)
Eluent	THF (stabilized)
Flow Rate	1.0 ml/min
Pressure	2.5 bars
Gas	Air
Gain	6
Temperature	40 ^o C

Analyzed by : Polymer Laboratories, Church Stretton GREAT BRITAIN