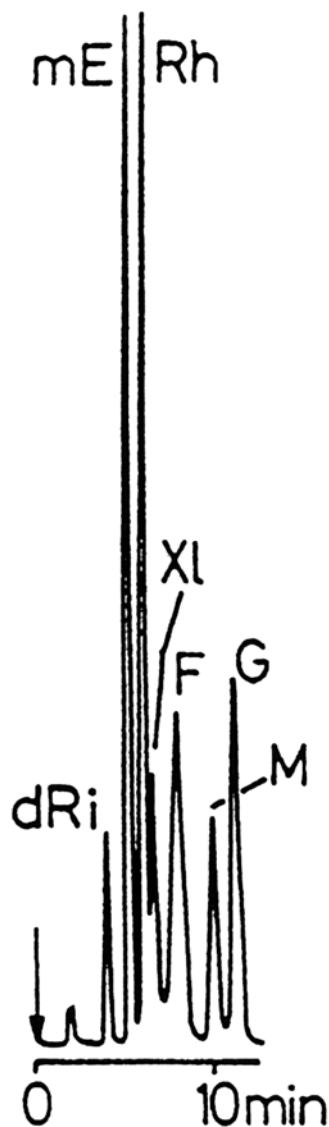


SEDEX Low Temperature Evaporative Light Scattering Detector

SAMPLE: SUGARS

SFC

RI : Deoxyribose
mE: Mesoerythritol
Rh : Rhamnose
F : Fructose
MI : Mannose
G : Glucose



CONDITIONS

Column	<i>Lichrospher Diol 250 x 4.6 mm</i>
Eluent	<i>CO₂/Methanol (84.5/15.5) [w/w]</i>
Flow Rate	<i>1.77 ml/min</i>
Pressure	<i>3900 psi</i>
Temperature	<i>Detector: 40° C, Column: 40° C</i>

Analyzed by : LCBA 45100 Orleans FRANCE [J. Chromatogr. 555 (1990) 299]

S.E.D.E.R.E.
PARC VOLTA - BP 27
9, rue Parmentier
94141 Alfortville Cedex FRANCE

Application #49