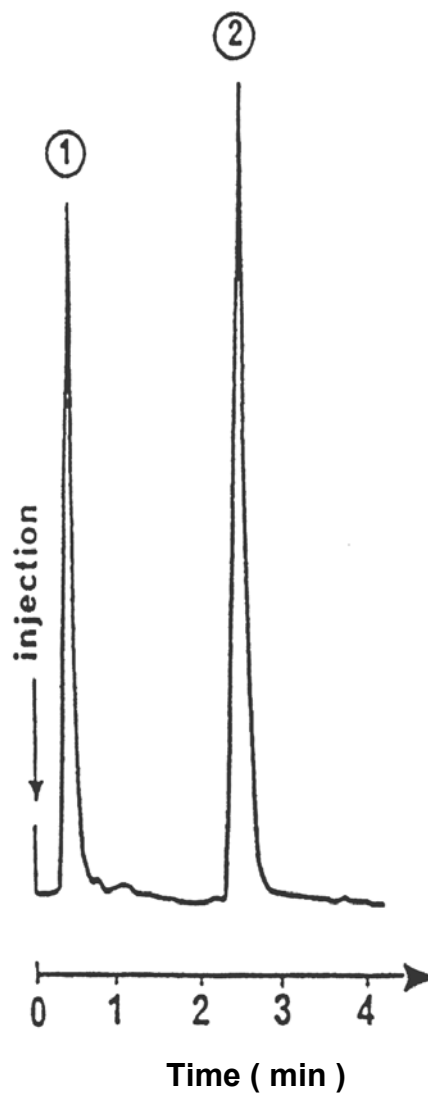
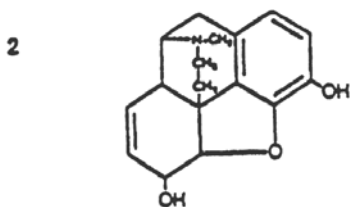
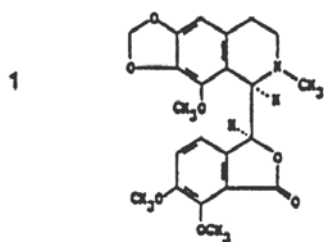


SEDEX Low Temperature Evaporative Light Scattering Detector

SAMPLE: OPIUM ALKALOIDS

SFC

1. Narcotine
2. Morphine



CONDITIONS

Column	<i>Spherisorb NH₂</i> <i>12 x 4.6 mm</i>
Injected Quantity	<i>0.5 µg</i>
Eluent	<i>CO₂/Methanol (90/10) [w/w]</i>
Flow Rate	<i>8 ml/min</i>
Pressure	<i>290 BarS</i>
Temperature	<i>Detector: 40° C, Column 40° C</i>

Analyzed by : ESPCI OF Paris FRANCE [J. Chromatogr. Sci. 25 (1987) 396]