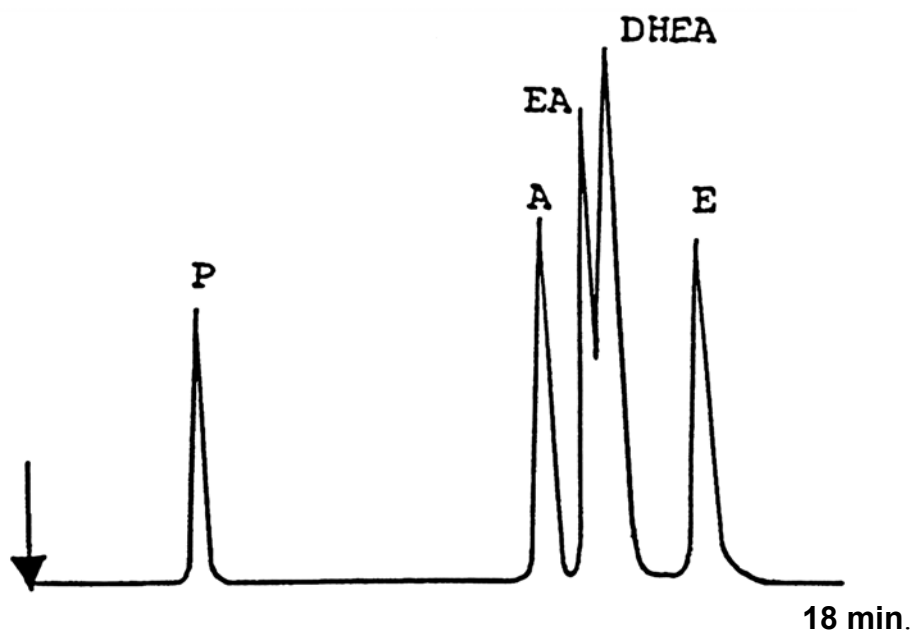


SEDEX Low Temperature Evaporative Light Scattering Detector

SAMPLE: HORMONAL STEROIDS

HPLC

P : Progesterone
A : Androsterone
EA: Epi-Andosterone
E : Ethiocholanone
DHEA: Dehydroepiandrosterone



CONDITIONS

Column	<i>Lichrosorb Diol - 5 μm 25 x 4.6 mm</i>
Injected Volume	<i>20 μl</i>
Eluent	<i>Hexane/Chloroform (60/40)</i>
Flow Rate	<i>1 ml/min</i>
Gas	<i>Nitrogen</i>
Pressure	<i>2.3 Bars</i>
Temperature	<i>45° C</i>

Analyzed By : LCBA 45100 Orleans FRANCE

S.E.D.E.R.E.
PARC VOLTA - BP 27
9, rue Parmentier
94141 Alfortville Cedex FRANCE

Application #28