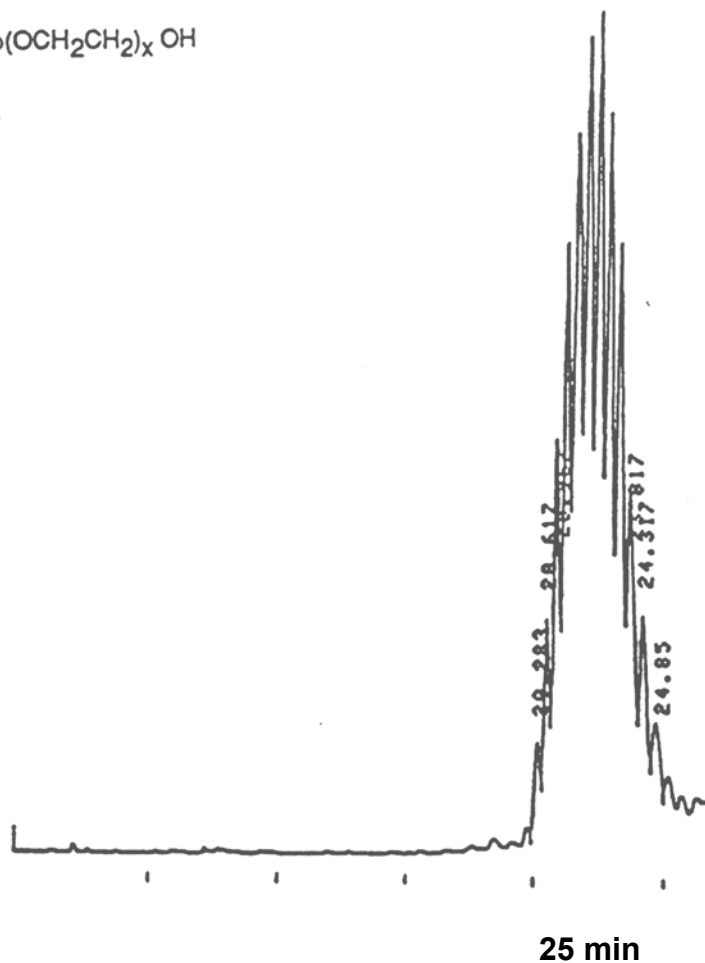
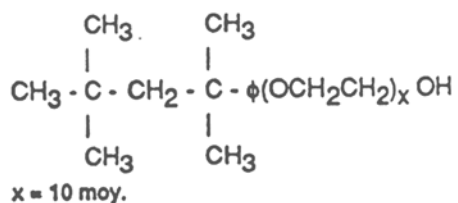


# SEDEX Low Temperature Evaporative Light Scattering Detector

SAMPLE: TRITON X 100

HPLC  
Gradient



Gradient: Methanol/Water 10/90 to 90/10 in 30 min

## CONDITIONS

Column	Zorbax TMS - 7 $\mu\text{m}$ 150 x 4.6 mm
Injected Volume	20 $\mu\text{l}$ (Injected Quantity 8 $\mu\text{g}$ )
Eluent	A: Methanol B: Water
Flow Rate	1.5 ml/min
Gas	Air
Pressure	2.5 Bars
Temperature	40° C

Analyzed By : LCBA 45100 Orleans FRANCE

S.E.D.E.R.E.  
PARC VOLTA - BP 27  
9, rue Parmentier  
94141 Alfortville Cedex FRANCE

Application #22