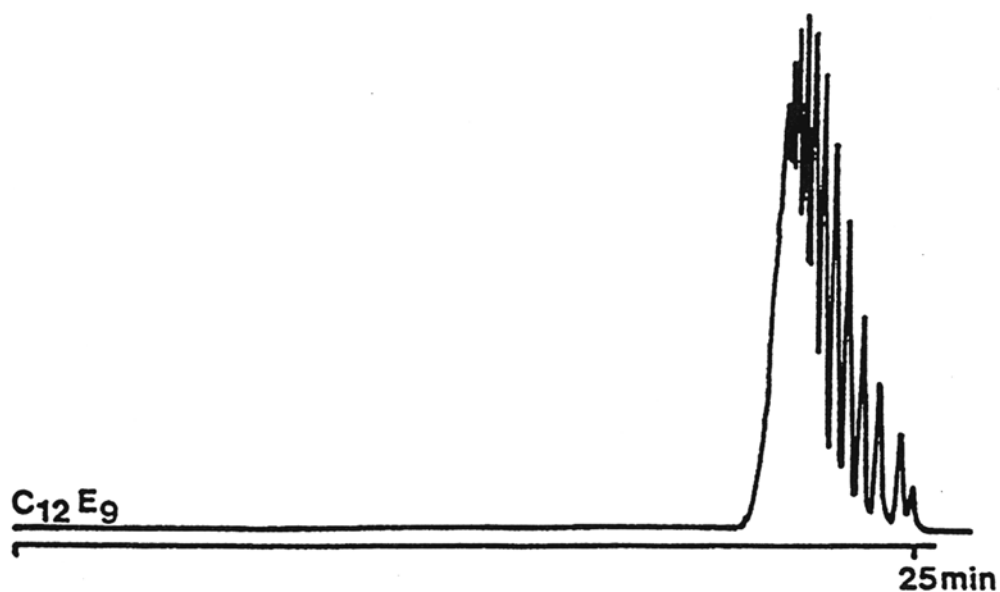


SEDEX Low Temperature Evaporative Light Scattering Detector

SAMPLE: POLYOXYETHYLENE ALCOHOLS
(C₁₂E₉)

HPLC
Gradient



Gradient: Acetonitrile 10% to 90% in 30 min

CONDITIONS

| | |
|-----------------|--|
| Column | <i>PRLPS - 5 μm 125 x 4.6 mm</i> |
| Injected Volume | <i>20 μl (Injected Quantity 10 μg)</i> |
| Eluent | <i>A: Acetonitrile B: Water</i> |
| Flow Rate | <i>1.5 ml/min</i> |
| Gas | <i>Air</i> |
| Pressure | <i>2.5 Bars</i> |
| Temperature | <i>40° C</i> |

Analyzed By : LCBA 45100 Orleans FRANCE