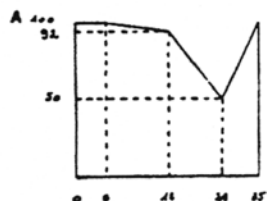
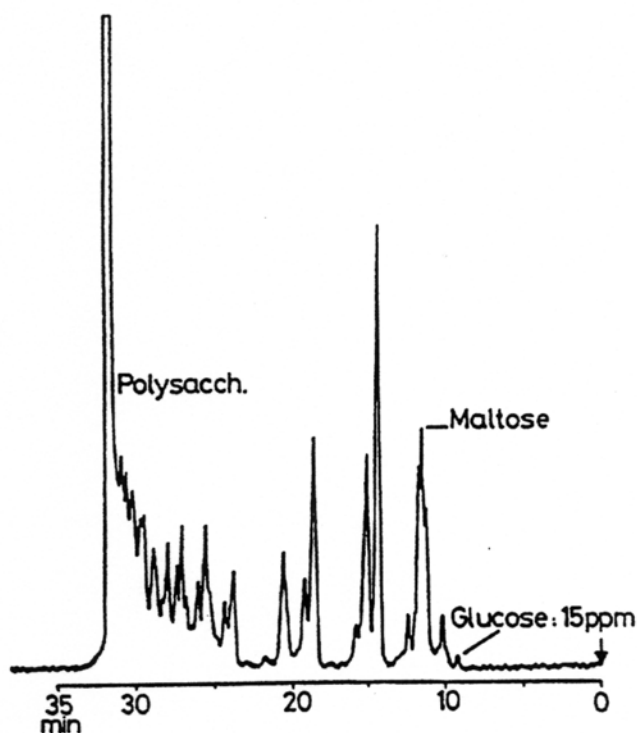


SEDEX Low Temperature Evaporative Light Scattering Detector

SAMPLE: POLYSACCHARIDES (Beer)

HPLC
Gradient



Gradient Profile

CONDITIONS

Column	<i>Zorbax ODS - 5 μm</i> <i>250 x 9.4 mm</i>
Injected Volume	<i>20 μl</i>
Eluent	<i>A: Water, B: Methanol</i>
Flow Rate	<i>1.2 ml/min</i>
Pressure	<i>2.5 bars</i>
Gas	<i>Air</i>
Temperature	<i>45° C</i>

Analyzed By : LCBA 45100 Orleans FRANCE [J. Chromatogr. 404 (1987) 95]